

# iFelix

Just one click away



Store

iPod

## Home Airport Software Hardware Mac OS X Windows XP Wireless Bluetooth

### The iFelix unofficial Airport Extreme and Airport Express Printer Compatibility List

This is an unofficial list of USB printers which are compatible with the AirPort Extreme Base Station and Airport Express. Printers in **bold** have been added to the original list that Apple provided. Printers in **dark red** are in fact the only printers I have personally tested.

Please also note that due to changes in the firmware of both the Airport Extreme base station and the introduction of the Airport Express some printers which are in this list *may* no longer in fact be compatible.

Before connecting your USB printer to the AirPort Extreme Base Station or Airport Express, first connect the printer to a Macintosh computer and print a test page. Once your printer is connected to the base station, check to see that the printer is listed in the printer list in the Print Center (Applications/Utilities/Print Center).

Printing through the AirPort Extreme Base Station requires Mac OS X v10.2.3, Mac OS X v10.2.5 recommended. Check Software Update within the System Preferences for the latest updates.

If you have problems printing at the highest quality setting, try printing at a lower setting. Error and status messages may not be available. For example, you may not see messages such as "Out of Paper" or "Printer Busy" when the printer is connected to the AirPort Extreme Base Station or Airport Express. To use printer utilities, you must connect the printer directly to the Macintosh computer.



#### Canon

##### Canon BJC-85

Canon BJC-2100

Canon BJ S6300

Canon BJC-8200

##### Canon BJ M70

Canon i70

##### Canon i80

##### Canon i250

##### Canon i320

##### Canon i350

Canon i450

**Canon i455** (some problems reported)

##### Canon i550

##### Canon i560

Canon i850

##### Canon i860

##### Canon i865

Canon i950

##### Canon i960

**Canon i9100** (with AEBS firmware 5.3)

#### Epson

##### Epson D88

Epson Stylus C40UX

##### Epson Stylus C41UX

Epson Stylus C42UX

Epson Stylus C60

Epson Stylus C62

Epson Stylus C80

Epson Stylus C82

**Epson Stylus C84** (driver from Epson website)

##### Epson Stylus C86

##### Epson Stylus COLOR 660

##### Epson Stylus COLOR 685

Epson Stylus COLOR 740

Epson Stylus COLOR 740i

Epson Stylus COLOR 760

Epson Stylus COLOR 777

Epson Stylus COLOR 777i

Epson Stylus COLOR 8 (cubed)

Epson Stylus COLOR 880

Will this printer work?

Will this printer work with an Airport Extreme Base Station or an Airport Express? →

Troubleshooting

For support on troubleshooting check this [Apple Printer troubleshooting for AirPort Extreme and AirPort Express page](#)

Windows Printing and AEBS or AX

Printing to a printer on an Airport Extreme Base Station or Airport Express from an XP PC →

Printing from a Windows XP PC to a printer attached to an Airport Extreme Base Station or Airport Express using Bonjour →

Printing to a printer on an Airport Extreme Base Station from Windows 2000 PC →

Problems with finding Printer Driver on Windows XP when using printer connected to Airport Extreme or Express →

[Comments \(127\)](#)  
[Trackback \(0\)](#)

**Canon i9900** (some problems reported)  
**Canon MP780** (now reported as working)  
**Canon S300**  
 Canon S450  
 Canon S520  
 Canon S600  
 Canon S630  
 Canon S750  
 Canon S800  
 Canon S820  
**Canon S830D**  
 Canon S900  
 Canon S9000  
**Canon Pixma iP1500**  
**Canon Pixma iP3000**  
**Canon Pixma iP4000**  
**Canon Pixma iP5000**  
**Canon Pixma iP6600D**(some problems reported)  
**Canon Pixma iP8500**  
**Canon Pixma MP110** (printing only)  
**Canon Pixma MP500** (printing only)  
**Canon Pixma MP750** (printing only)

**HP**

**HP LaserJet 4L**  
**HP LaserJet 5M**  
 HP LaserJet 6P  
**HP LaserJet 6MP** (through USB adaptor cable)  
**HP LaserJet 1012**  
**HP LaserJet 1022**  
 HP LaserJet 1200  
 HP LaserJet 1300  
 HP LaserJet 1320  
 HP LaserJet 2100  
**HP LaserJet 2200**  
**HP LaserJet 2300**  
 HP Color LaserJet 1500L  
 HP Color LaserJet 2300  
**HP Color LaserJet 2500**  
 HP Color LaserJet 2500L  
**HP Color LaserJet 2550**  
**HP Color LaserJet 3700**  
 HP DeskJet 450  
 HP DeskJet 450cbi  
**HP DeskJet 812c**  
**HP DeskJet 840c**  
**HP DeskJet 842c**  
**HP DeskJet 845** (works with GIMP)  
**HP DeskJet 895cxi** (OS X only)  
 HP DeskJet 920c  
 HP DeskJet 930c  
 HP DeskJet 935c  
 HP DeskJet 940c  
**HP DeskJet 952C**  
**HP DeskJet 960c**  
 HP DeskJet 970cse  
 HP DeskJet 970cxi  
 HP DeskJet 990c  
**HP DeskJet 990cxi**  
 HP DeskJet 995c  
**HP DeskJet 1220c**  
**HP DeskJet 5150** (problems reported)  
**HP DeskJet 5552**  
 HP DeskJet 3820  
 HP DeskJet 5550

Epson Stylus COLOR 880i  
 Epson Stylus COLOR 900  
**Epson Stylus COLOR 980**  
 Epson Stylus COLOR 980N  
**Epson Style CX3200** (printing only)  
**Epson Style CX4600** (printing only)  
**Epson Style CX5400** (printing only)  
**Epson Style CX6600** (printing only)  
**Epson Stylus Photo 750**  
 Epson Stylus Photo 785EPX  
**Epson Stylus Photo 830u** (requires Airport Update EPSON-PrinterUP010as.pkg)  
**Epson Stylus Photo 870** (some problems reported)  
 Epson Stylus Photo 875DC  
 Epson Stylus Photo 810  
 Epson Stylus Photo 820 (Requires AirPort Extreme Firmware 5.0.4)  
 Epson Stylus Photo 890  
**Epson Stylus Photo 895**  
**Epson Stylus Photo 915** (tested with Windows only)  
**Epson Stylus Photo 935**  
**Epson Stylus Photo 1200**  
 Epson Stylus Photo 1270  
 Epson Stylus Photo 1280 (Requires v1.3aA driver, included in Mac OS X v10.2)  
 Epson Stylus Photo 1290  
**Epson Stylus Photo RX600** (printing only)  
 Epson Stylus Pro 7600  
**Epson R200** (some problems reported)  
**Epson R300** (must use latest drivers)  
**Epson Stylus Photo R800**  
**Epson Stylus Photo R1800**  
**Epson C900 Color Laser**

**Lexmark**

Lexmark E310  
 Lexmark E322  
 Lexmark C750  
 Lexmark C910  
 Lexmark Optra S 1650  
 Lexmark T420 (Requires latest printer drivers)  
 Lexmark T620  
 Lexmark W812 (Requires latest printer drivers)  
**Lexmark C720**  
**Lexmark C750**  
**Lexmark C910**  
**Lexmark C912**  
**Lexmark E232**  
**Lexmark E234n**  
**Lexmark E320**  
**Lexmark E321**  
**Lexmark E322**  
**Lexmark E323**  
**Lexmark T420**  
**Lexmark T520**  
**Lexmark T522**  
**Lexmark T620**  
**Lexmark T622**  
**Lexmark T630**  
**Lexmark T632**  
**Lexmark T634**  
**Lexmark W812**



This document was last updated on the 17 March, 2006

**amazon.com**  
and you're done.

[HP Officejet 5610 All-in-One Printer...](#)  
Hewlett Packard

[Belkin Pro Series USB 2.0 Device Cab...](#)  
Belkin Components

[Canon PIXMA MP500 All-In-One Photo P...](#)  
Canon

[Canon PIXMA iP1600 Photo Printer](#)  
Canon Office Produ...

[Brother HL-5250DN Network Ready Lase...](#)  
BROTHER

(Prices may change)  
[Privacy Information](#)

**amazon.com**  
and you're done.

[Firefly - The Complete Series](#)  
Nathan Fillion  
New \$24.96!

(Prices May Change)  
[Privacy Information](#)

Download on **iTunes**

Diana Krall  
Christmas Songs  
New Album +

HP DeskJet 5550  
 HP DeskJet 5650 (problems reported)  
**HP DeskJet 5740**  
 HP DeskJet 6122  
 HP DeskJet 6127  
**HP DeskJet 9650**  
**HP DeskJet 9800**  
**HP PSC 720** (printing only)  
**HP PSC 750xi** (printing only)  
**HP PSC 1110** (printing only)  
**HP PSC 1210** (printing only)  
**HP PSC 1300** (printing only)  
**HP PSC 1350** (printing only)  
**HP PSC 1350xi** (printing only)  
**HP PSC 1610** (printing only)  
**HP PSC 2110** (printing only)  
**HP PSC 2170** (printing only) \*\*  
**HP PSC 2200** (printing only) \*\*  
**HP PSC 2310** (printing only)  
**HP PSC 2355** (printing only) \*\*  
**HP PSC 2410** (printing only) \*\*  
**HP PSC 2510** (printing only) \*\*  
**HP PSC 2610** (printing only) \*\*  
**HP PSC 2610xi** (printing only)  
**HP PSC 2710** (printing only) \*\*  
**HP PhotoSmart 325** \*  
**HP PhotoSmart 375** \*  
**HP PhotoSmart 7260** \*  
**HP PhotoSmart 7460** \*  
**HP PhotoSmart 7660** \*  
**HP PhotoSmart 7760** (use driver 2.7)  
**HP PhotoSmart 7960** \*  
**HP PhotoSmart 8150** \*  
**HP PhotoSmart 8450** \*  
**HP PhotoSmart 8459** \*  
**HP PhotoSmart P1000** (with [HPIJS driver](#))  
**HP OfficeJet 4110** (printing only)  
**HP OfficeJet 4215** (printing only, don't use updated drivers)  
**HP OfficeJet 6100** (printing only) \*\*  
**HP OfficeJet 6110xi** (printing only)  
**HP OfficeJet 6210** (printing only) \*\*  
**HP OfficeJet 7310** (printing only) \*\*  
**HP OfficeJet 7410** (printing only) \*\*

\* according to [HP](#) must use driver version 2.7  
 \*\* according to [HP](#) must use drivers 6.3.4 or 7.0

### PostScript printers

Brother HL-1270N  
 Brother HL-1440 (problems reported)  
 Brother HL-1470N  
 GCC Elite 21E  
 HP LaserJet 6P  
**HP LaserJet 6MP** (through USB adaptor cable)  
 HP LaserJet 1200  
 HP LaserJet 2100  
**HP LaserJet 2200**  
**HP Color LaserJet 2500**  
 HP Color LaserJet 2500L  
 Kyocera FS-1900  
 Xerox Phaser 6200DX  
**Magicolor 2350 DL**

**Lexmark W820**  
**Lexmark Z615**  
**Lexmark Optra W810**  
**Lexmark Optra Color 45**  
**Lexmark Optra EP** (using USB Parallel Adapter)

[Lexmark Website](#) for Airport supported printers

### Samsung

**Samsung ML-1210** (use these [OS X 2.5 drivers](#))  
**Samsung ML-1430**  
**Samsung ML-1450** (use these [OS X 2.5 drivers](#))  
**Samsung ML-1510**  
**Samsung ML-1710** (use these [OS X 2.5 drivers](#))  
**Samsung ML-1740** (use these [OS X 2.5 drivers](#))  
**Samsung ML-2010**  
**Samsung ML-4600** (use the ML-1650 GDI\_PCL driver)

### Konica Minolta

**Konica Minolta 1350W** (Windows only)  
**Konica Minolta 2300W** (v1.3.1111.0 driver)

### Brother

[Brother Printers and Firmware 5.5 and 6.1](#)

Brother HL-1270N  
**Brother HL 1435**  
 Brother HL-1440 (problems reported)  
**Brother HL 1450**  
 Brother HL-1470N  
**Brother HL-2030** (use this [process](#) to print)  
**Brother HL-2040** (use this [process](#) to print)  
**Brother HL-5040** (use this [process](#) to print)  
**Brother HL 5140**  
**Brother HL-5150D**  
**Brother HL-5150DLT**  
**Brother MFC-4420C**  
**Brother MFC-4800** (use this [process](#) to print)  
**Brother MFC-8820D**

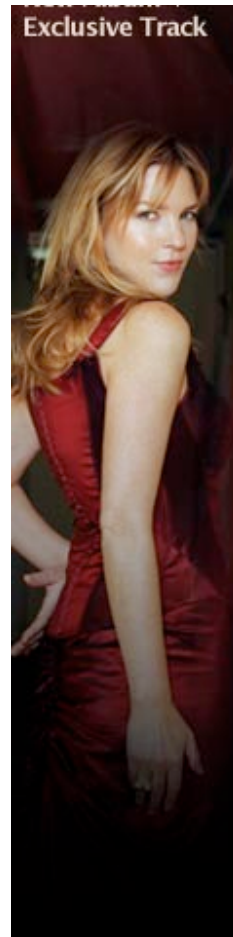
Useful [Brother Web Page](#)

### Xerox printers

**Xerox 8200 DP (solid ink color laser)**  
**Xerox Phaser 8400B**  
**Xerox Phaser 6100** (use CUPS printer driver)

### Kyocera

Kyocera FS-1900  
**Kyocera (Mita) Ecosys FS 920**



looking for great value home insurance?  
 oh yes!



click here for a quote

churchill.com

iFelix Blog

Check the [iFelix Blog](#)

## Airport Extreme Wireless Printer Compatibility List

This is an unofficial list of *wireless* printers which are compatible with the AirPort Extreme wireless network. In theory any printer which conforms to 802.11g or 802.11b will work with an Airport network. Some printers have issues with b/g mode.

### HP

HP DeskJet 6840  
HP PSC 2510  
HP PSC 2710

### Canon

iP4000r  
iP5200r

## Airport Extreme and Express Printer Incompatibility List

These printers are deemed to **not** work out of the box (or if at all) with an Airport Extreme or Express in the same way as the printers listed above. Where the printer is [linked](#) then there is page with further information which may be of use.

### Epson

Epson Photo Stylus 830u  
[Epson Stylus 2200](#)

### Canon

Canon CP330  
Canon C900  
Canon iP4200  
Canon MP730 (some have managed to get this to work)

### Brother

MFC-8440

### HP

[HP PSC 750](#) (printing only)  
HP PSC 950 (use this [process](#) with HPIJS, printing only)  
[HP LaserJet 5L](#)  
[HP OfficeJet 5110](#) (printing only)  
HP OfficeJet 7130xi  
HP PhotoSmart 1215 (use this [process](#))  
**HP PhotoSmart 245**  
[HP PhotoSmart 7760](#)  
HP Deskjet 3745 (use this [process](#))  
HP Deskjet 3940 (use this [process](#) with 3840 driver)

[General HP Printer Support](#)

If your printer is not listed in either list then it has not been tested by anyone to see if it will work or will not work.

If you are having problems with Firmware 5.5 or 6.1 please read this [page](#) - note that Apple has now updated the firmware to 5.5.1 and 6.1.1 which resolves some of the issues with "missing" printers.

If an HP printer is not on the unofficial compatibility list or with a workaround this generally means that it is *not* supported for use with the Airport Express/Airport Extreme Base Station with HP's own printer driver and may not work at all. The following [solution](#) may work.

[Home](#) - [Airport](#) - [Software](#) - [Hardware](#) - [Mac OS X](#) - [Windows XP](#) - [Windows](#) - [PocketPC](#) - [Wireless](#) - [Bluetooth](#)

Content Copyright ©2004-2005 iFelix